

# THYROID GLAND

DW/Paper 5th

(11)

Thyroid gland is described by Thomas Watson in 1656. It is situated in the neck region near the trachea. Thyroid gland consists of two lobes connected by narrow band called isthmus.

Thyroid gland develop as an outgrowth of fore gut.

## Thyroid glands in different vertebrates:

In protochordates and cyclostomes the endostyle is homologous to thyroid gland.

In elasmobranch fishes it is unpaired. In the case of teleosts it is paired.

In amphibians, it is paired structure. Among reptiles and the lizards contain paired thyroid gland. But snakes, turtles and crocodiles it is unpaired. In birds & mammals it is paired.

## STRUCTURE OF THYROID GLAND:

Each lobe of thyroid gland is formed of numerous spherical masses called follicles. Each follicle is covered by a basement membrane. In the centre each follicle contains a cavity filled with a colloidal material. The cavity is lined by a layer of cuboidal epithelial cells.

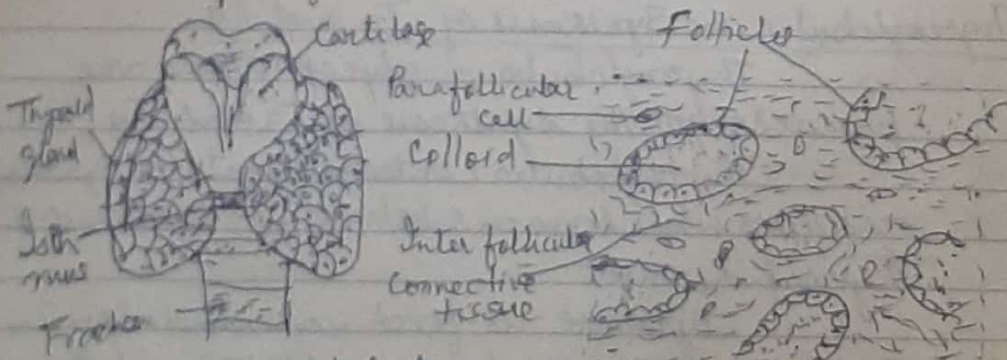


Fig. Thyroid gland  
(Ventral view)

Fig. T.S. of thyroid gland.