

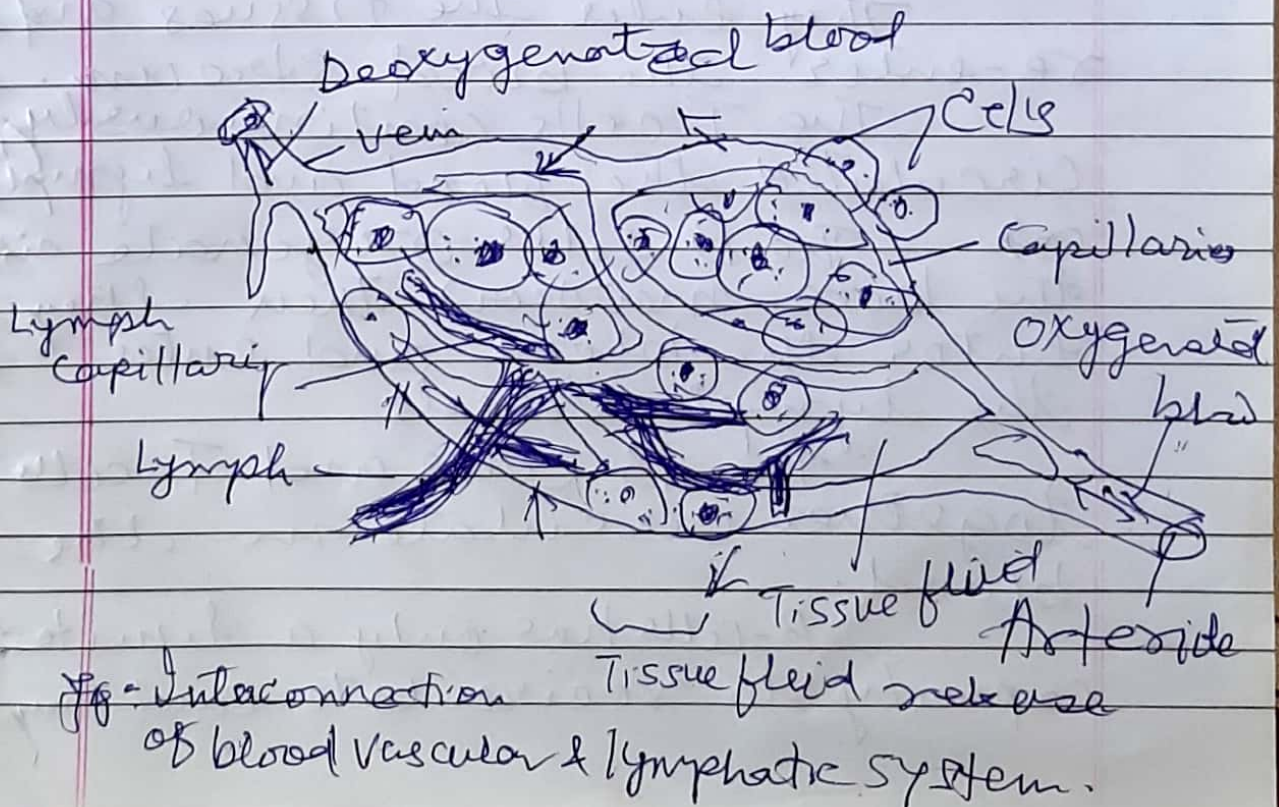
Lymphocyte Traffic

The combination process of circulation and recirculation of lymphocytes through blood and lymph is referred as lymphoid trafficking.

The lymphocytes that enter the blood from primary lymphoid organs circulate through the secondary lymphoid organs namely lymph nodes, spleen, etc. and circulate back to the blood via the lymphatic system to be recirculated in the very same pathway.

The blood vascular system and lymphatic system are interconnected by tissues.

The blood vascular system opens into the tissues by capillaries. Similarly the lymphatic system opens into the tissues by lymph capillaries.



The lymphocytes originate from stem cells of bone marrow. They enter the blood.

The T lymphocyte originate in the bone marrow. Then they leave the bone marrow and enter the blood stream.

From the blood they enter the thymus. They mature in the thymus. After maturity they enter the blood stream.

From the blood they can enter the MALT, spleen and lymph nodes through lymph vessels.

They enter the tissues and re-enter the blood stream.

The T-cells continuously circulate the blood and lymph

~~out~~ The B-cells originate in the bone marrow then they enter the blood and enter the lymph vessels.

The B-cells and T-cells together circulate in the blood.

B-cells has only a limited capacity to recirculate and they

are mainly fixed to the secondary lymphoid organs.

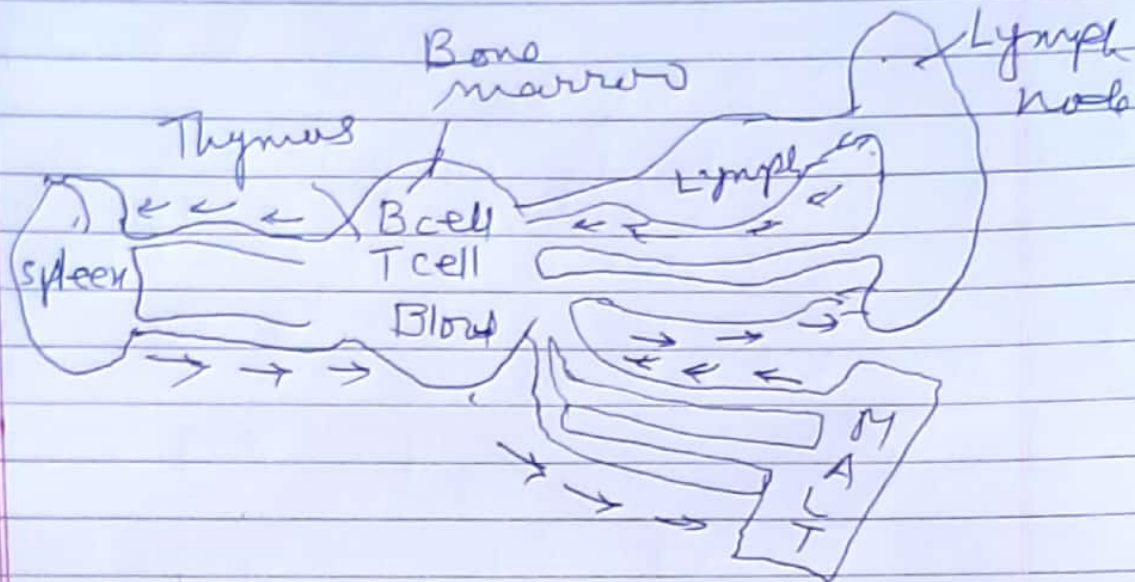


Fig - lymphocyte traffic.

The lymphocyte that enters the secondary lymphoid organs from the blood stream, get into the efferent lymphatic duct after a day or two. From there they re-enter the blood stream via the thoracic duct.

