

Female Reproductive System of Birds

The female reproductive system consists of an ovary and oviduct.

In birds, the ovary and oviduct are found only on the left side. The right ovary and oviduct are atrophied.

a) Ovary: The ovary is a large, irregular structure attached to the ventral side of the left kidney by a fold of peritoneum called mesovarium.

b) Oviduct: It is a wide, convoluted tube, starting close to the ovary and running behind to open in the proctodaeum. It is differentiated into the following regions.

i) Oviduct funnel or infundibulum: It is the membranous, anterior, wider and funnel-shaped part of the oviduct which opens into the body cavity, from where the egg enters.

ii) Magnum: The part of the oviduct behind the oviduct funnel is called the magnum. It is thick-walled, glandular and secretes albumin or egg white.

iii) Isthmus: The next part behind the magnum is the isthmus. It secretes the shell membrane.

iv) Uterus : The succeeding part of the oviduct is thin walled uterus and secretes calcareous shell and the albumen.

v) Vagina : Vagina is posterior most, thick walled and muscular part of the oviduct, devoid of glands - It opens into Urodaeum.

A vestigial right oviduct is found attached to the right side of cloaca.

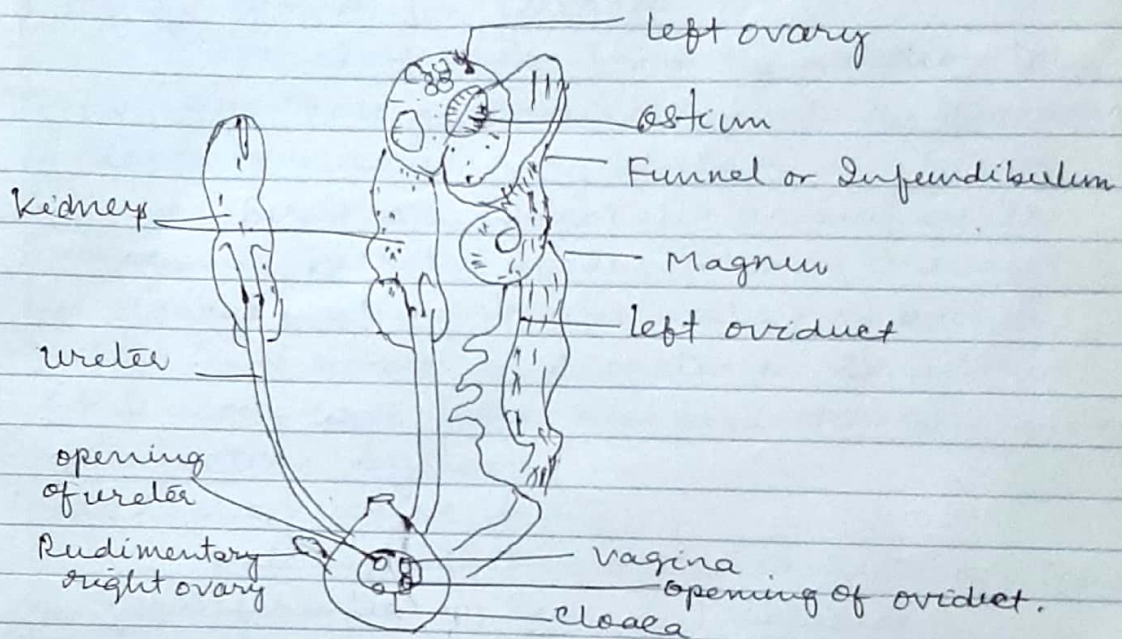


Fig - Female Urinogenital system of Pigeon.