

FASCIOLA HEPATICA

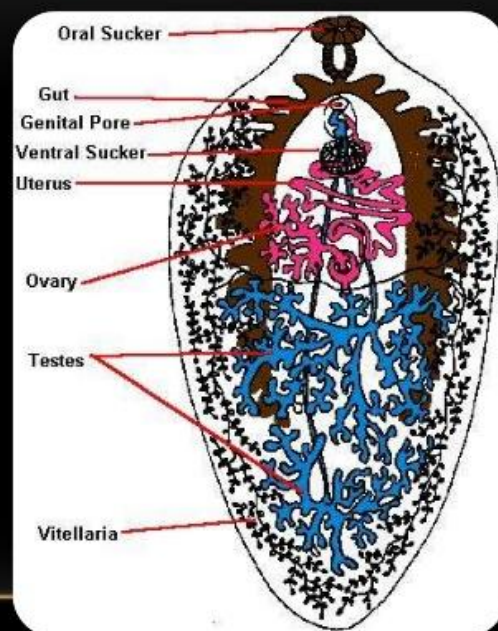
- Fasciola hepatica, also known as the common liver fluke or sheep liver fluke, is a parasitic flatworm of the class Trematoda, phylum Platyhelminthes that infects the livers of various mammals, including humans. The disease caused by the fluke is called fascioliasis (also known as fasciolosis). *F. hepatica* is distributed worldwide, and causes great economic losses in sheep and cattle. It has been known as an important parasite of sheep and cattle for hundreds of years.

DR. T.V. RAO MD

2

INTRODUCTION

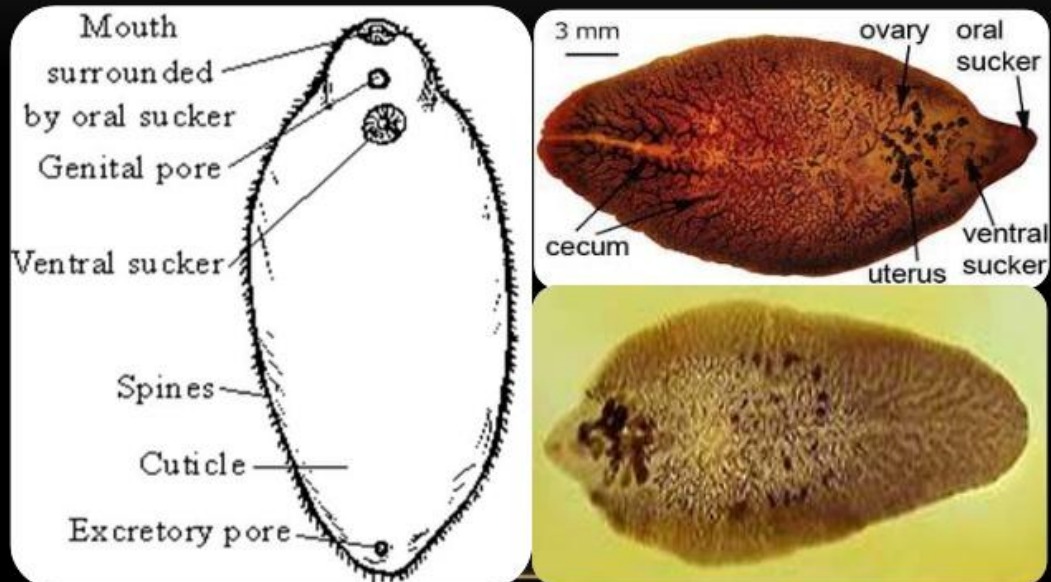
- Phylum: Platyhelminthes
- Flat worm
- Liver fluke
- Effects sheep, cattle, and sometimes humans



DR. T.V. RAO MD

3

MORPHOLOGY OF F. HEPATICA



DR. T. V. RAO MD

5

F. HEPATICA

- Definitive host:
 - Sheep
 - Cattle
 - Humans (Accidental)
 - Other Mammals
- Intermediate host
 - **Fresh Water Snail**
- Geographic Range
 - Cosmopolitan; anywhere sheep and cattle are raised



DR. T. V. RAO MD

6

