



Symbol of P-N diode

Note:- Zener diodes are P-N diodes which are designed to operate in the breakdown region and act as constant voltage source.

07

March
Sunday

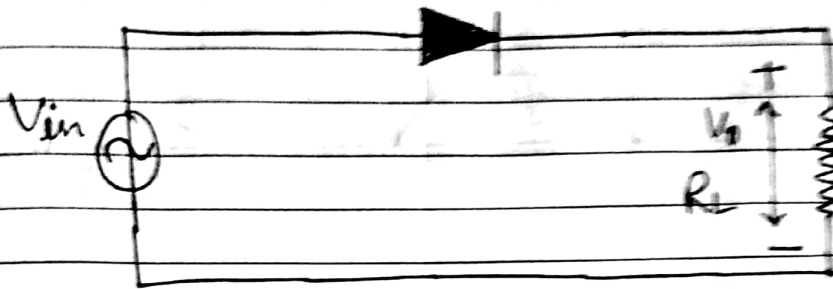
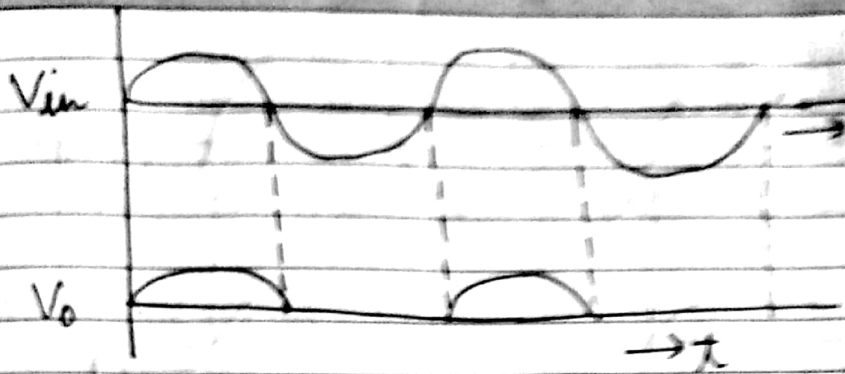
P-N Diode as Rectifier

Because the P-N diode has a low resistance when forward biased and very high resistance in the reverse direction, it can be used as a rectifier in two ways

1) Half wave rectifier

for only half of the cycle and by using one diode only. Rectification is done

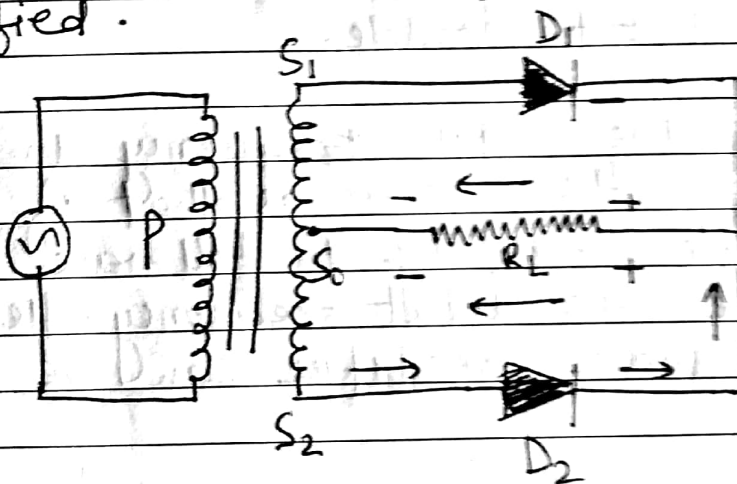
W	T	W	T	F	S	S	M	T	W	T	F	S	S	M	T	W	T	F	S	S
1	2	3	4	5	6	7	8	9	10	11	12	13	14	15	16	17	18	19	20	21
22	23	24	25	26	27	28	29	30	31											



Current flows only when diode is forward biased.

Full wave rectifier

Both the halves of a complete cycle are rectified.



Here each diode conducts for half the cycle and current flows for the full cycle in the load.

M	T	W	T	F	S	S	M	T	W	T	F	S	S	M	T	W	T	F	S	S
1	2	3	4	5	6	7	8	9	10	11	12	13	14	15	16	17	18	19	20	21
22	23	24	25	26	27	28	29	30												