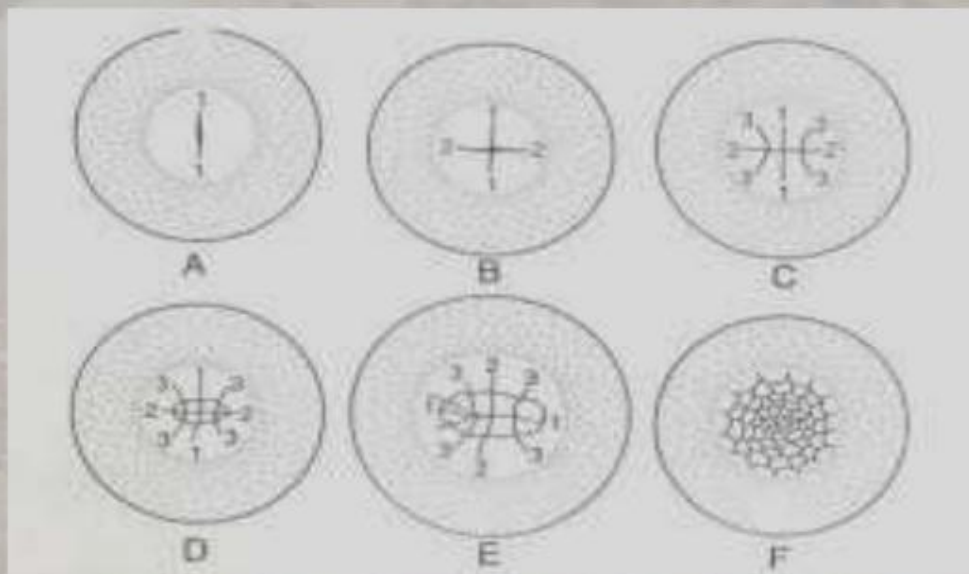


## DEVELOPMENT OF CHICK

### CLEAVAGE OR SEGMENTATION

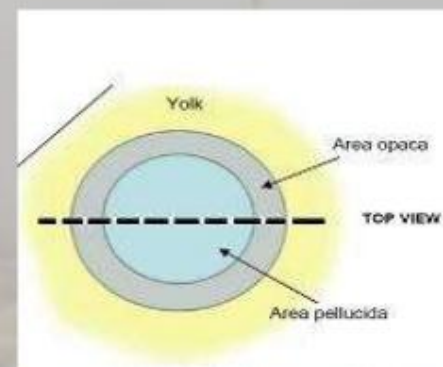
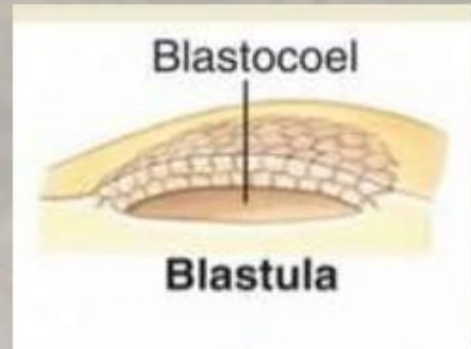
- It starts with the cleavage. It is meroblastic means confined to small area of **blastodisc**. Duration it takes 12-16 hours
- First cleavage forms **two cells**
- Second cleavage occurs after **20 min** of first cleavage **four cells** formed
- Third cleavage **eight cells** formed
- Irregular cleavage occurs in four hours at the end cleavage **256** irregular cells formed

### CLEAVAGE OR SEGMENTATION



## BLASTULATION

- After cleavage, blastulation occurs, due to blastulation following structure formed
- **Sub-germinal cavity:** it is similar to blastocoel
- **Area pellucida:**  
The translucent central area of the blastoderm. Form the body proper
- **Area opaca:**  
The opaque area of the blastoderm surrounding the area pellucida. Help in the formation of extra embryonic membrane such as yolk sac.



## PROCESS OF GASTRULATION

- Conversion of monoblastic egg into triploblastic gastrula.
- Gastrulation involves the formation of ectoderm, endoderm and mesoderm

