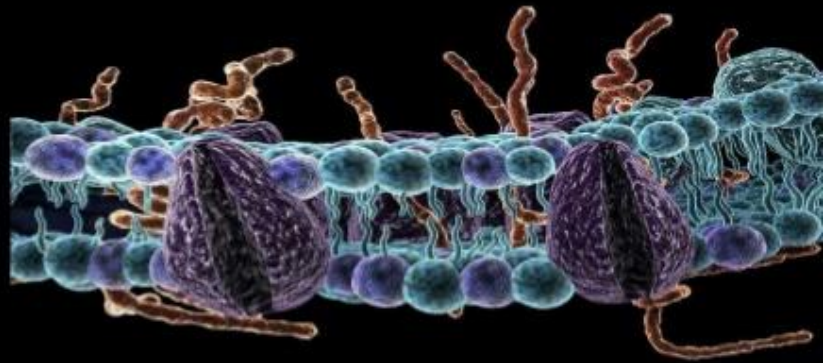


Introduction

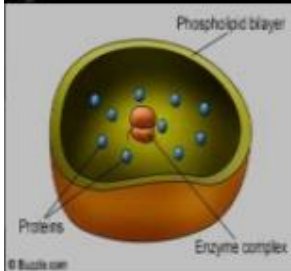
- **Membranes are the borders between different regions of a cell.**
- **Where membranes exist, differing cell environments can be maintained**
- **The plasma membrane borders the entire cell separating the internal environment from the external environment**

DEFINITION

- **Biological membranes are thin, flexible surfaces separating cells and cell compartments from their environments**



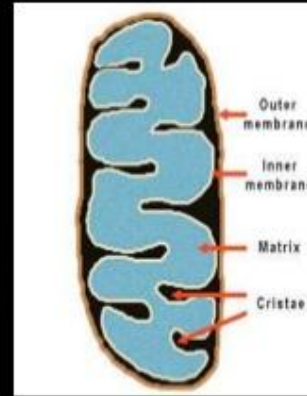
ORGANELLES CONTAINING MEMBERANE



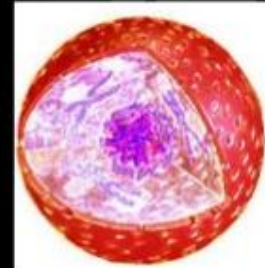
Lysosomes



Golgi bodies



Mitochondria



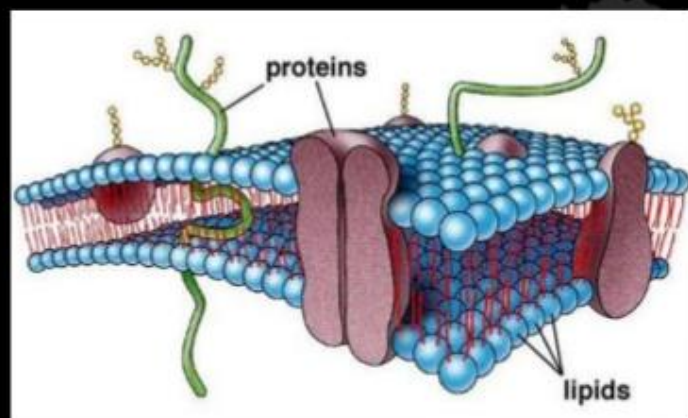
Nucleus

3

COMPONENTS

Components of membrane are:

- Proteins
- lipids
- Carbohydrates



5